



# Flexi-Scope

Take pictures and video  
up to 200x magnification

## Warranty & Support

This product is provided with a one year warranty for problems found during normal usage. Mistreating the Flexi-Scope or opening the unit will invalidate this warranty.

All out of warranty repairs will be subject to a replacement fee.

## Technical Support

Please visit [www.tts-group.co.uk](http://www.tts-group.co.uk) for the latest product information.

Email [feedback@tts-group.co.uk](mailto:feedback@tts-group.co.uk) for technical support.

TTS Group Ltd.  
Park Lane Business Park  
Kirkby-in-Ashfield  
Nottinghamshire,  
NG17 9GU, UK.

Freephone: 0800 318686 Freefax: 0800 137525

## Flexi-Scope

WARNING: Do not dispose of this product in household waste. Hand it over to a collection point for recycling electronic appliances.

WARNING! Not suitable for children under 36 months due to small parts – choking hazard. Made in China, on behalf of the TTS Group Ltd.



TTS Group Ltd.,  
Park Lane Business Park,  
Kirkby-in-Ashfield,  
Nottinghamshire,  
NG17 9GU, UK

TTS Product Code:  
**ELO0149**



## USER GUIDE

[www.tts-shopping.com](http://www.tts-shopping.com)


## Important Information


- Please retain these instructions for future reference
- Do not allow your Flexi-Scope to come into contact with water or other liquids
- In the event of an electro-static discharge, your Flexi-Scope may malfunction. In this case, you may need to disconnect from the computer to reset it
- Warranty is void if the case is opened for any reason
- The warranty does not cover any data loss from the unit nor any consequential loss of information



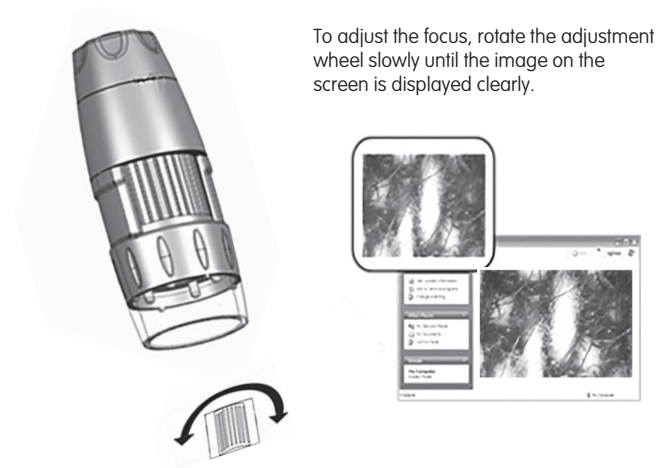
## Flexi-Scope Controls

There are two buttons on the base of the Flexi-Scope:

Press the snapshot button to take a new picture. 

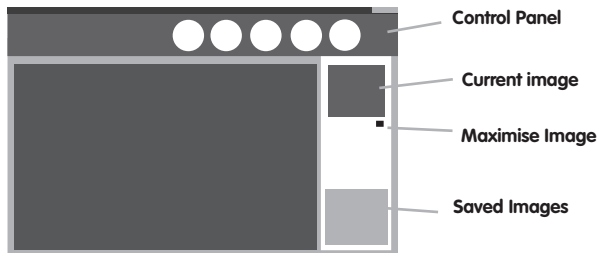
Press the Light button to turn on the LEDs. 

In addition to the camera button, Flexi-Scope has a 3.5mm mono jack socket so that external switches can be used to take pictures.



## Using the Flexi-Scope software

Place CD into CD-ROM drive and follow steps shown on screen, then reboot PC before you start the program.



To start the program, go to "Start" "Flexi-Scope"



Click this icon to take a picture. Pictures taken will be stored in the Folder "C:\MyPic130" by default



Start video recording and choose the Video settings. Videos will be stored in C:\MyVideo130 by default.



Video settings



Allows the user to take pictures and video automatically at set intervals



Click this icon to Exit the program



Click this icon to launch the "Flexi-Measure" application

## Using the Flexi-Measure software

X & Y co-ordinates will be displayed.

Dimension Tools

Colour & font

Foot-Notes

Measurement Settings

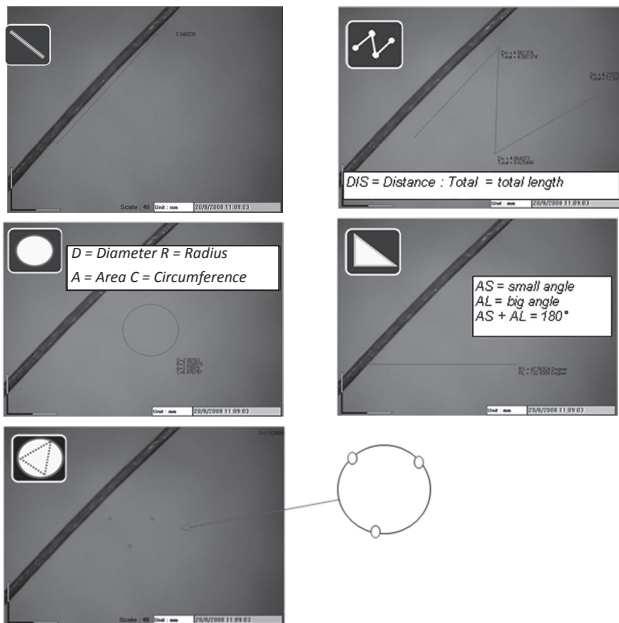


Before measurement, you need to know the Magnification reference number of the captured images and enter it into the magnification box"



Capture the image and read the magnification reference number from the focus wheel. Enter this figure into the magnification box





You can draw circle by moving the cursor to 3 points



Click this icon if you want to "undo" your previous action



Click this icon to choose the colour of the line or circle you want to show on screen.



You can add footnotes on photo. Click this icon & move cursor to place where you want to add text; then input your text in the blank text box.

## Settings



All captured images are saved in "C:\MyPic130" by default. Opening a captured image will display the image on the screen for measurement.



Click "Save" to save images to a location.



To email an image, Click "email" This will load your default email program (\* applicable for Microsoft Outlook only)



Click this icon to choose the footnote font size & colour



Click on this icon to enter the magnification reference (this must be done before making measurements)

## Technical specification

Feature	Specification
Image Sensor	1.3Megapixels Colour Sensor
Resolution	1.3M pixel (1280 x 960)
Frame rate	30 fps
Magnification	10X - 200X
LED lamp	6 LED light for illumination
Lens	high precision glass lens with filter
OS Support	Windows XP / Vista
Interface	High speed USB 2.0